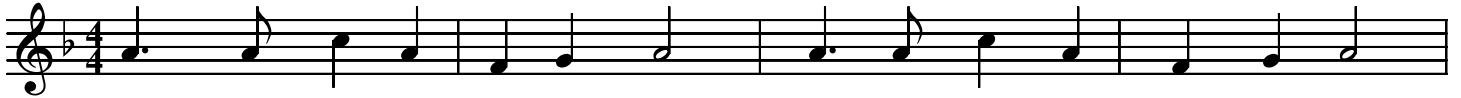


Watchman, Tell Us Of The Night

Tune: St. George by George J. Elvey, 1858

♩=120



Watch-man, tell us of the night, what its signs of prom-ise are.



Trav-'ler, o'er yon moun-tain's height, see that glo-ry beam-ing star.



Watch-man, does its beau-teous ray aught of joy or hope fore-tell?



Trav-'ler, yes; it brings the day, prom-ised day of Is-ra-el.