

Shining O'er Bethlehem

Old English

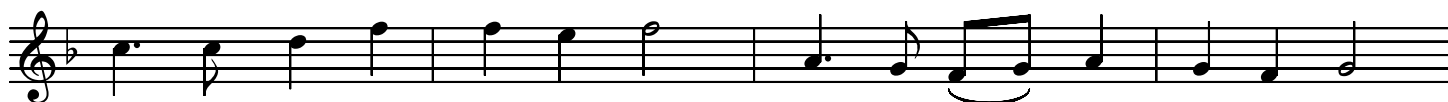
♩=115



Shin - ing o'er Beth - le - hem, to faith - ful Watch - ers given, The



Star a - bove the mid - day light il - lumed the vault of Heaven.



East - ern Sag - es, each a King, Mys - tic sym - bols of - fer - ing



Re - gal gold, and priest - ly frank - in - cense, and death - ly



myrrh, their pre - cious tri - bute bring.