

# Shine Calm And Bright

Rev. George P. Grantham



Shine calm and bright, ye moon-beams bright, O'er Bethl'-hem's town in



cham-ber, O'er young and old, o'er bur-gess bold, And guests in good-ly



num-ber; For shel-ter'd safe from Win-ter's frost, Well housed and warm all



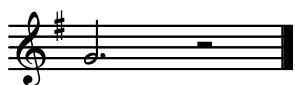
lie, Se-cure from snow in street be-low, And screen'd from fro-zen



sky. But Babe be-nign! No couch is Thine, Save low-ly man-ger



stall, Where cold winds blow on Thy Form di-vine, Who com-est to save us



all.