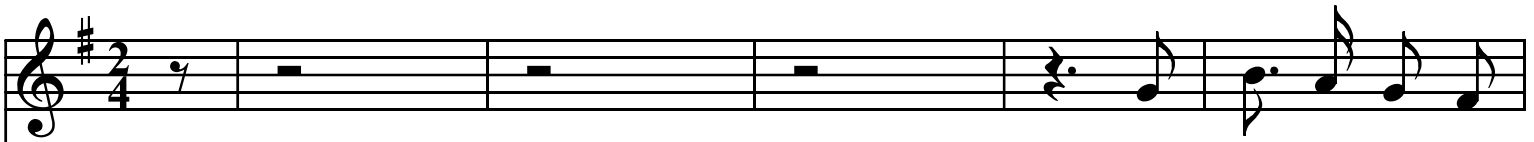


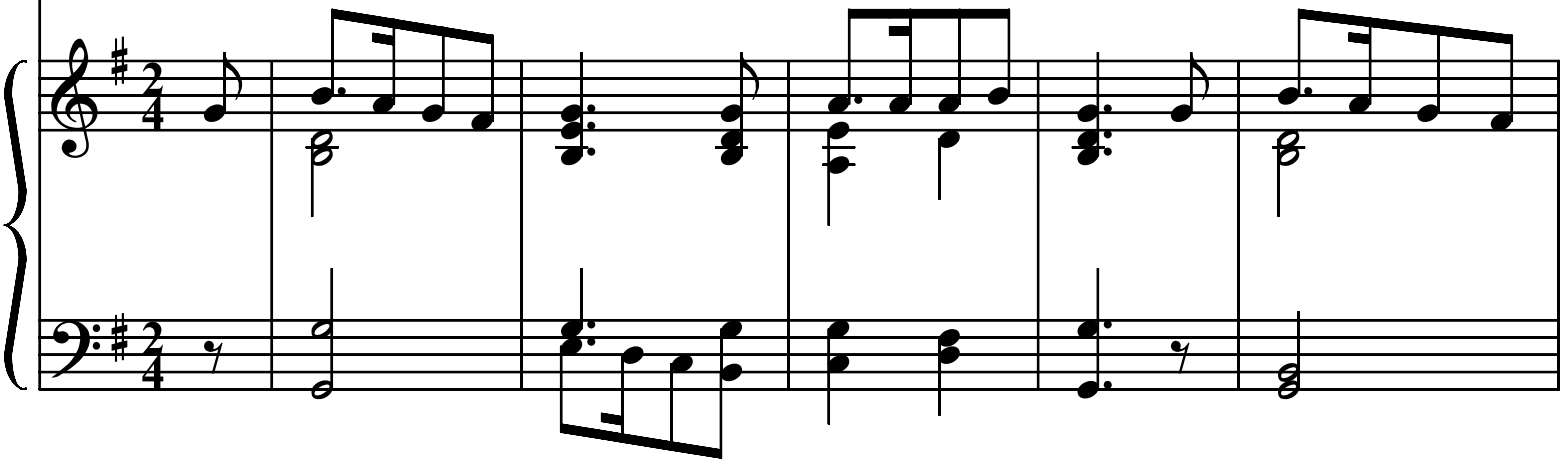
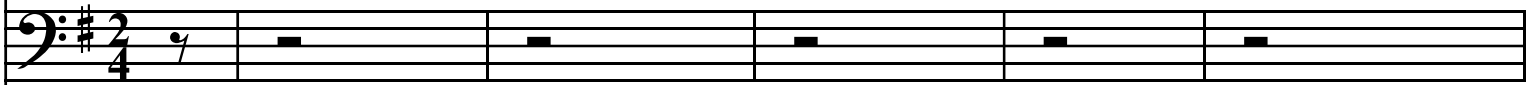
Husbandman and Servingman

English Traditional

♩=85



Well met my bro-ther



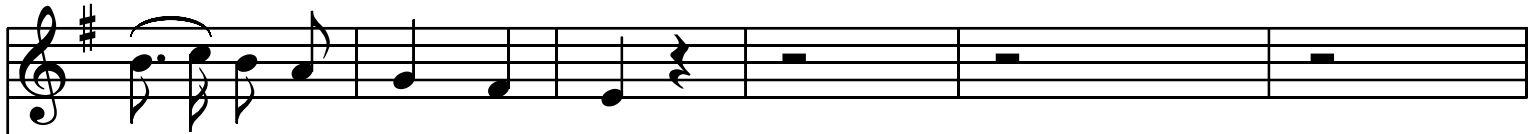
7

friend, all at this high-way rid-ing, So sim-ply all a - lone,

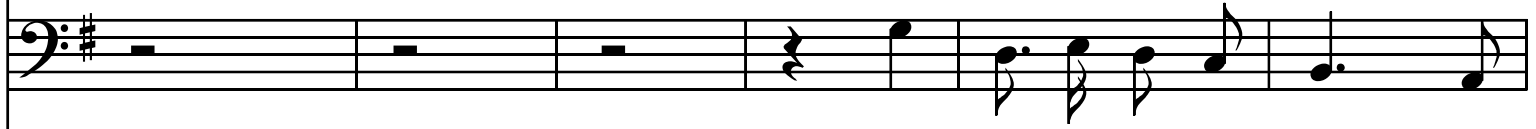
13

I pray you tell to me what may your cal-ling be, Or

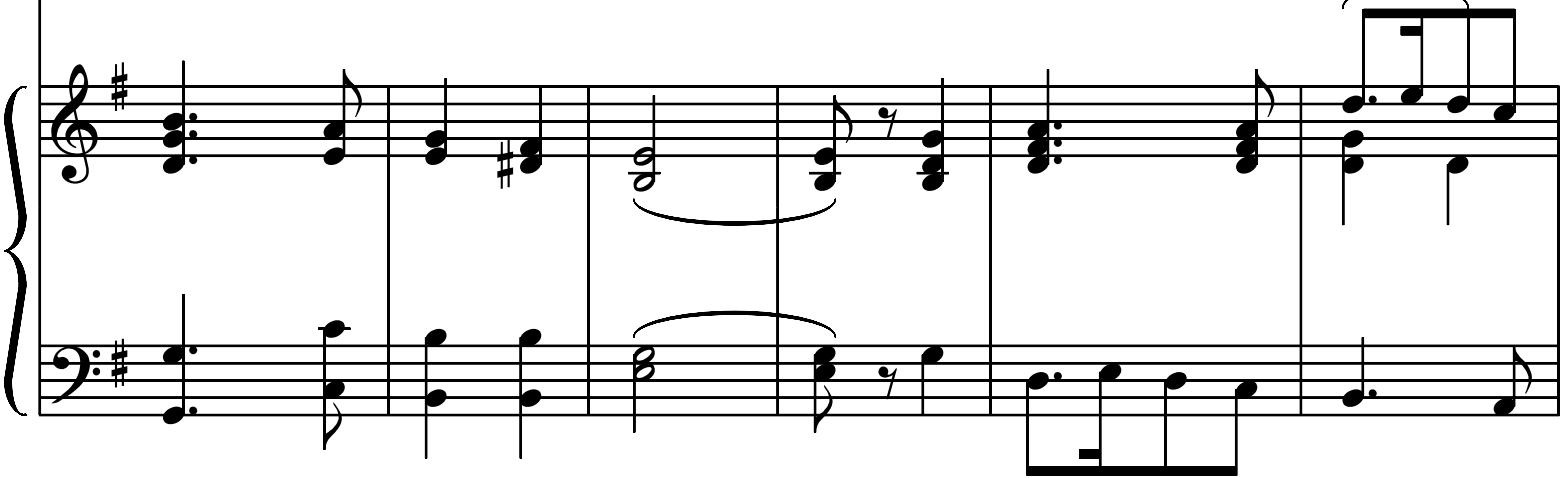
18



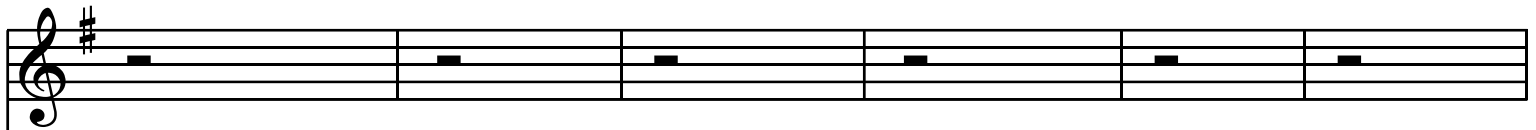
are you a serv - ing - man?



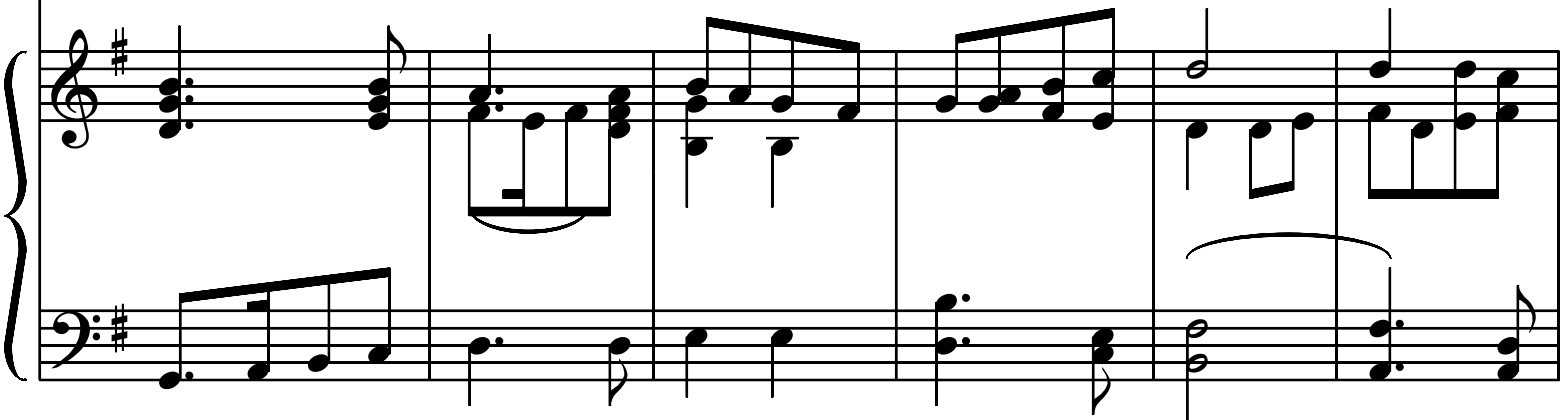
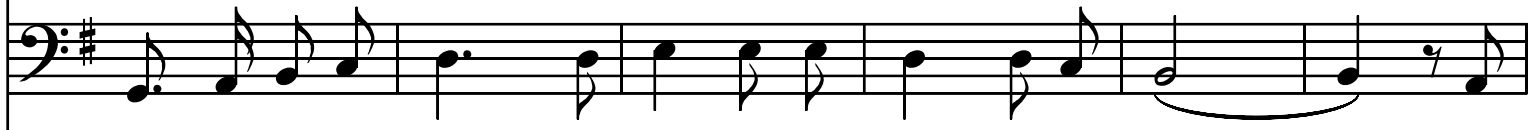
O why my bro-ther dear what



24



makes you to en - quire Of a - ny such thing at my hand? But



30

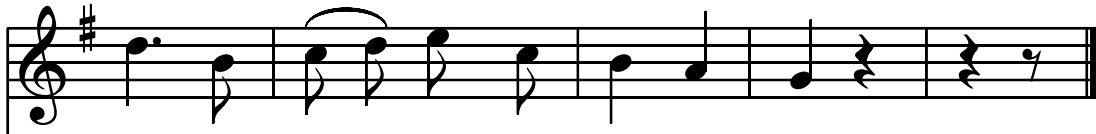
since you are so fain, then I will tell you plain, I am a down-right

The musical score for measures 30-34 consists of four staves. The top staff is a treble clef with a key signature of one sharp (F#) and contains five whole rests. The second staff is a bass clef with a key signature of one sharp (F#) and contains a melodic line for the vocal part. The lyrics are written below this staff. The third and fourth staves are a grand staff (treble and bass clefs) with a key signature of one sharp (F#), providing a piano accompaniment with chords and moving lines.

35

I pray you tell to me what may your cal-ling
hus-band - man. But since you are so fain, then I will tell you

The musical score for measures 35-39 consists of four staves. The top staff is a treble clef with a key signature of one sharp (F#) and contains a vocal line with lyrics. The second staff is a bass clef with a key signature of one sharp (F#) and contains a vocal line with lyrics. The lyrics are written below these two staves. The third and fourth staves are a grand staff (treble and bass clefs) with a key signature of one sharp (F#), providing a piano accompaniment with chords and moving lines.



be, Or are you a serv-ing - man?



plain, I am a down-right hus-band - man.

