

In Excelsis Gloria

Martin Shaw

$\text{♩} = 140$

$\text{♩} = 110$
Verse



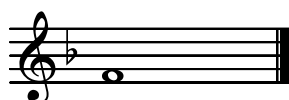
Christ - o pa - re - mus can - ti - cam, ex - cel - sis glo - ri - a. When



Christ was born of Ma - ry free In Beth - le - hem that fair ci - ty.



An - gels did sing with mirth and glee, In ex - cel - sis Glo - ri -



- a.