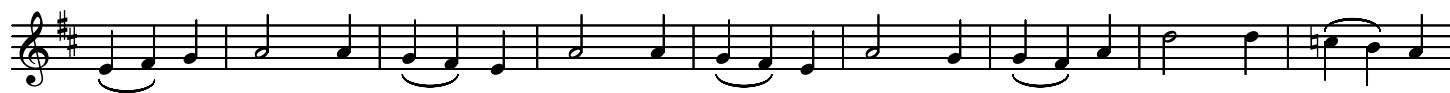


Hominum Laudes

Martin Shaw



Christ, hath Christ's Moth - er Bourne, our dear Bro - ther, In the



stalls of Beth - le - hem. Then leave we all Je - ru - sa - lem, To kiss the King of



Beth - le - hem! Cui vo-ci-bus gau - den-ti-bus Di - ca-mus: can - ta-mus: Glo-ri - am!